

Investment project

Sv.Lovrec, Istria



Ref	RE-AB-TUR33
Type	Investment project
Region	Istria > Poreč
Location	Sv.Lovrec
Front line	No
Sea view	No
Plot size	10900 sqm
Price	€ 3 000 000

Investment project

Sv.Lovrec, Istria



Advantageous project in Sveti Lovrec near Porec!

It is approximately 10,900 m² in size

The project is done for 66 apartments

16 buildings with 4 apartments each and one with 2 large apartments

Construction is expected to start in in January 2026.

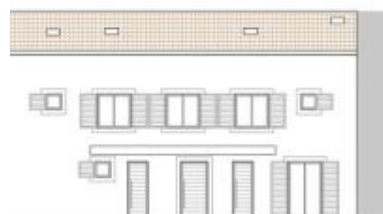
3 M eur + VAT with the included conceptual design.

All construction documentation is available, with technical description.

Overall additional expenses borne by the Buyer of real estate in Croatia are around 7% of property cost in total, which includes: property transfer tax (3% of property value), agency/brokerage commission (3%+VAT on commission), advocate fee (cca 1%), notary fee, court registration fee and official certified translation expenses. Agency/brokerage agreement is signed prior to visiting properties.

Investment project

Sv.Lovrec, Istria



PROČELJE
MJ 1:100



LOKACIJA GRA
NA MASTERPLA
MJ 1:100