

Land plot

Solta island, Dalmatia



Ref	RE-LB727
Type	Land plot
Region	Dalmatia > Island Solta
Location	Solta island
Sea view	Yes
Distance to sea	250 m
Plot size	5800 sqm
Price	€ 1 300 000

Land plot

Solta island, Dalmatia



The most promising land site on the island of Solta is the closest to Split and the ferry connection connected with it.

The plot of 250 meters from the sea with a beautiful view of the sea and the tiled roofs has an area of 5800 m². There is a project for the construction of 18 villas with pools on two levels each.

Compact layout is extremely optimal:

First level: living-dining room with kitchen, terraces, summer kitchen, parking.

Second level: three bedrooms, two bathrooms, terrace.

This is the most common and popular format of the villa, which is most in demand in the market.

Update of the data as of 21 september 2016

Overall additional expenses borne by the Buyer of real estate in Croatia are around 7% of property cost in total, which includes: property transfer tax (3% of property value), agency/brokerage commission (3%+VAT on commission), advocate fee (cca 1%), notary fee, court registration fee and official certified translation expenses. Agency/brokerage agreement is signed prior to visiting properties.

Land plot

Solta island, Dalmatia



Price per m²:
224 €

Average price/m² of this type
in this region:
304 €

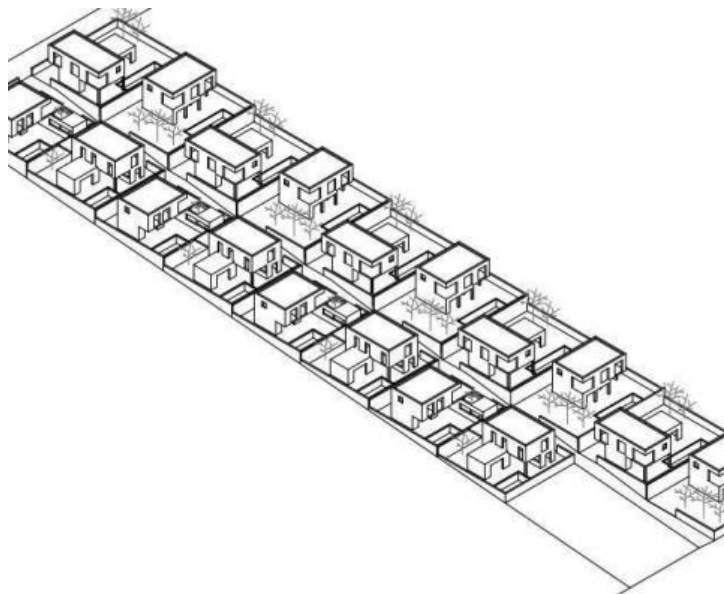
Median price/m² of this type
in this region:
212 €

Average price/m² of this type
in Croatia:
270 €

Median price/m² of this type
in Croatia:
184 €

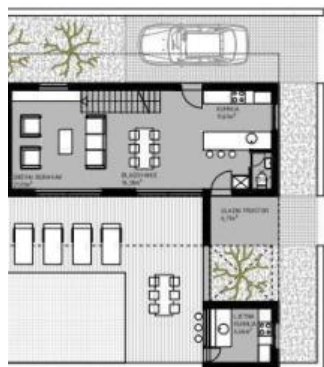
Land plot

Solta island, Dalmatia

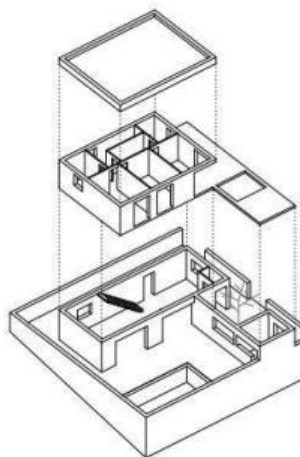


Land plot

Solta island, Dalmatia



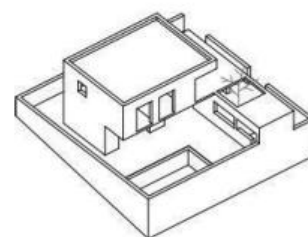
DVOJNA KUĆA - TIP 1
Pparc=258 m²
katnost P=1
Pbruto=136 m²
Pneto=106 m²
1 parking mjesto
bazen=28 m²
terase=72 m²
zelene površine=55m²



TLOCRT PRIZEMLJA + AKSONOMETRIJA



DVOJNA KUĆA - TIP 1
Pparc=258 m²
katnost P=1
Pbruto=136 m²
Pneto=106 m²
1 parking mjesto
bazen=28 m²
terase=72 m²
zelene površine=55m²



TLOCRT KATA + AKSONOMETRIJA